

# Current Recreational Access Agreements: Bulkley TSA

May 2006

**Integrated Land  
Management  
Bureau**

## Introduction

The Smithers area provides a broad spectrum of outdoor recreation opportunities. Local recreation clubs and interested individuals have been pro-active in addressing their differing needs, including both motorized and non-motorized forms of recreation, through the negotiation of many area-specific agreements on seasonal access. This document provides a tabular summary of *agreements* on recreational access in the Bulkley Timber Supply Area (TSA) (and portions of the Morice TSA in the Telkwa Mountains), and is current to May 2006. This document is not meant to be a comprehensive listing of trails in the area, but rather a reflection of the agreements that have been made to date on particular trails. There are still some unresolved issues and undesignated areas that will be addressed in the future.

A Recreational Access Management Plan (RAMP) was completed in 1997 for the Bulkley TSA by a diverse group of local people. It identified seasonal restrictions on motorized use on some areas of crown land to address emerging recreational conflicts between motorized and non-motorized users. It established general principles regarding use, education and monitoring, and also established principles specific to motorized and non-motorized recreation and related environmental protection. Portions of the TSA were zoned for seasonal motorized or non-motorized use, and portions of the TSA were left unresolved. The RAMP is available at [www.for.gov.bc.ca/dss/RAMP/RAMPtoc.htm](http://www.for.gov.bc.ca/dss/RAMP/RAMPtoc.htm).

Subsequent to 1997, several agreements have been negotiated among stakeholders that have successfully resolved access issues in some areas that were left as “unresolved”, “future process”, or “non-designated” in the RAMP. The following tables and associated maps summarize negotiated recreational access management agreements to May 2006, and provide a listing of allowable recreational activities by area.

There is a general expectation within the community that these agreements will be respected by all those who enjoy outdoor recreation in this area.

**TABLE OF CONTENTS**

Recreational Access within Bulkley TSA ..... 1  
Babine Mountains Park Access Agreements ..... 4  
Harold Price Meadows Access Agreements ..... 6  
Telkwa Mountains Caribou Recovery Area Access Agreements ..... 10  
Quick Reference by Mode Type ..... 12

**LIST OF FIGURES**

Figure 1: Map of Babine Mountains Access ..... 3  
Figure 2: Map of Harold Price. .... 5  
Figure 3: Map of Hudson Bay Mountain.. .... 7  
Figure 4: Map of Telkwa Mountains Caribou Recovery  
Area..... 9

**LIST OF TABLES**

Table 1: Recreational Access within Bulkley TSA..... 1  
Table 2: Babine Mountains Park Access Agreements. .... 4  
Table 3: Harold Price Meadows Access Agreements. .... 6  
Table 4: Hudson Bay Mountain Access Agreements. .... 8  
Table 5: Telkwa Mountains Caribou Recovery Area Access Agreements..... 10

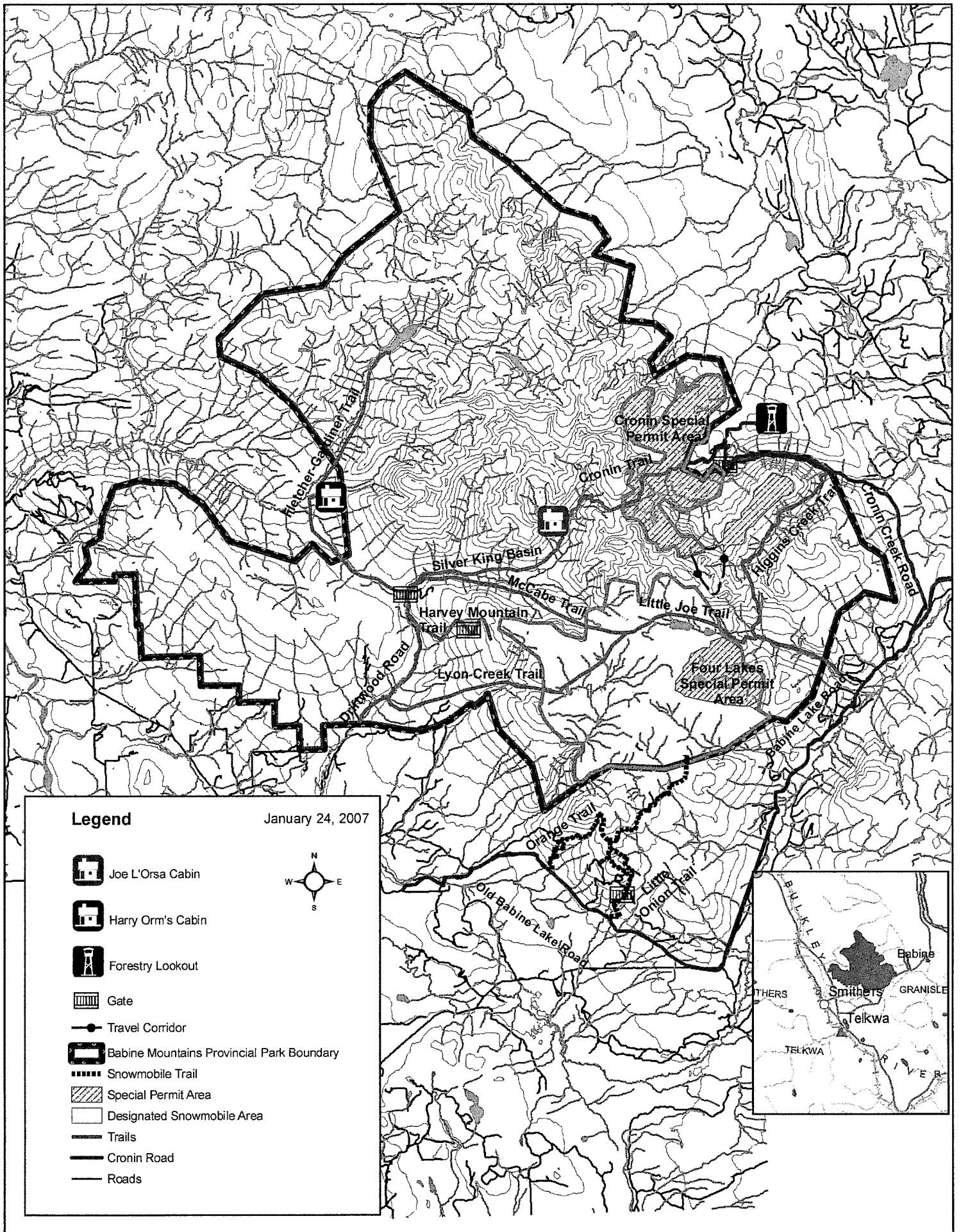
## Recreational Access within Bulkley TSA

- Motorized use does not preclude non-motorized use unless specified in comments section.
- Motorized designation refers to land only. For information regarding water access, please see comments column or contact BC Parks.
- Summer motorized use is only on hard surface roads and trails when in sensitive terrain such as alpine, wetlands, riparian (wet) areas or native grasslands.

**Table 1: Recreational Access within Bulkley TSA.**

Geographic Area	Summer Use	Winter Use	Comments
1. Ashman Ridge	Non-designated	Non-motorized	Backcountry ski touring area.
2. Babine River Corridor Park	Non-motorized (See comments)	Non-motorized	Jet boat use is allowed within the park. Horses are not allowed in the park.
3. Babine Mountains Park	Non-motorized (See comments)	Non-motorized (See comments)	Please refer to <b>Table 2: Babine Mountains Park Access Agreements</b> for detailed access information.
4. Blunt Basin	Non-motorized	Unresolved	
5. Boulder Creek Trail	Motorized	Non-designated	
6. Bud Lake, Louise Lake, and Sandstone Lake	Non-motorized	Non-designated	
7. Burnt Cabin Bog Ecological Reserve	Non-motorized	Non-motorized	Ecological reserves are not created for outdoor recreation. Most ecological reserves, however, are open to the public for non-destructive pursuits like hiking, nature observation and photography. For more information, contact BC Parks or visit <a href="http://www.env.gov.bc.ca/bcparks/eco_reserve/burntcabin_er.html">www.env.gov.bc.ca/bcparks/eco_reserve/burntcabin_er.html</a> .
8. Call Lake Provincial Park	Non-motorized	Motorized	For more information, contact BC Parks or visit <a href="http://www.env.gov.bc.ca/bcparks/explore/parkpgs/call_lake.html">www.env.gov.bc.ca/bcparks/explore/parkpgs/call_lake.html</a> .
9. Canyon Creek Ski Trails	Non-designated	Non-motorized	There is no cross-country ski track set.
10. Chris Dahlie Ski Trails, Pine Creek Ski Trails, Dog Ski Trails	Non-designated	Non-motorized	Please refer to <b>Table 4: Hudson Bay Mountain Access Agreements</b> for detailed access information.
11. Coffin Lake Rd	Motorized	Non-designated	
12. Corya Basin	Non-motorized	Non-designated	
13. Dome Trail, Cabin	Non-designated	Motorized	
14. French Peak	Motorized	Non-designated	
15. Frohlick-Gilbert Trail	Non-motorized	Motorized	Please refer to <b>Table 3: Harold Price Meadows Access Agreements</b> for detailed access information.
16. Glacier Gulch and Twin Falls	Non-motorized	Non-motorized	Please refer to <b>Table 4: Hudson Bay Mountain Access Agreements</b> for detailed access information.
17. Hankin Lake	Motorized	Non-designated	Summer motorized on hard pack trails only.
18. Hankin Lookout Trail	Motorized	Non-designated	Summer motorized on hard pack trails only.
19. Harold Price Meadows	Non-motorized	Motorized (See comments)	Please refer to <b>Table 3: Harold Price Meadows Access Agreements</b> for detailed access information.
20. Howson Creek Rd	Non-motorized (See comments)	Motorized (See comments)	Please refer to <b>Table 5: Telkwa Mountains Caribou Recovery Area Access Agreements</b> for detailed access information.
21. Hudson Bay Mtn, Crater Lake, Prairie	Non-motorized	Non-motorized	Please refer to <b>Table 4: Hudson Bay Mountain Access Agreements</b> for detailed access information.

Geographic Area	Summer Use	Winter Use	Comments
22. McDowell Lake, Road, and Trails	Non-motorized (See comments)	Non-designated	Non-motorized on trails and in areas without road access. Summer motorized on hard pack road only.
23. Microwave Plateau	Non-designated	Motorized	
24. Microwave Trail	Motorized	Motorized	
25. Moricetown-Cronin Trail	Non-motorized	Non-motorized (See comments)	Not recommended for horse or bicycle use as is very wet in places. The winter motorized Frohlick-Gilbert trail crosses the Moricetown-Cronin trail.
26. Netalzul Meadows Provincial Park	Non-motorized (See comments)	Non-motorized (See comments)	Foot traffic only. For more information, contact BC Parks or visit <a href="http://www.env.gov.bc.ca/bcparks/explore/parkpgs/netalzul.html">www.env.gov.bc.ca/bcparks/explore/parkpgs/netalzul.html</a> for more information.
27. Nilkitkwa Lake Provincial Park	Non-motorized	Non-motorized	Access is by boat only. For more information, contact BC Parks or visit <a href="http://www.env.gov.bc.ca/bcparks/explore/parkpgs/nilkitkwa.html">www.env.gov.bc.ca/bcparks/explore/parkpgs/nilkitkwa.html</a> .
28. North Mulwain	Non-motorized	Non-designated	
29. Northeast Slopes	Non-motorized	Non-motorized	Please refer to <b>Table 4: Map of Hudson Bay Mountain</b> for detailed access information.
30. Little Onion Trail	Non-motorized	Motorized	Please refer to <b>Table 2: Babine Mountains Park Access Agreements</b> for detailed access information.
31. Owen, Passby and Elliot Creeks and Passby Creek Trail	Non-designated (See comments)	Non-motorized	Backcountry ski area. Passby Creek Trail is summer motorized on hard pack trail only. Foot traffic only from end of trail to alpine.
32. Rainbow Alley Provincial Park	Non-motorized	Non-motorized	Access is by boat only. For more information, contact BC Parks or visit <a href="http://www.env.gov.bc.ca/bcparks/explore/parkpgs/rainbow.html">www.env.gov.bc.ca/bcparks/explore/parkpgs/rainbow.html</a> .
33. Rocky Ridge Rd	Motorized	Non-designated	Summer motorized on hard pack only.
34. Seaton Basin and Seaton Basin Rd	Non-motorized	Non-designated	Non-motorized on Seaton Basin Rd. during summer. Note sensitive meadow complexes.
35. Serb Creek	Non-motorized Future Process	Future Process	Fragile ecosystem (marsh/bog). Access should stay primitive in summer and low impact in winter.
36. Silvern Lakes Trail	Non-motorized	Non-designated	
37. Sinclair Range and Cabin	Non-motorized	Motorized	Smithers Snowmobile Association (SSA) has received authorization for the use of Sinclair Cabin during the winter. Only non-motorized access in the summer.
38. Telkwa Pass	Motorized	Non-designated	
39. Telkwa Mountains Caribou Recovery Area	Non-motorized (See comments)	Non-motorized (See comments)	Please refer to <b>Table 5: Telkwa Mountains Caribou Recovery Area Access Agreements</b> for detailed access information.
40. Toboggan Creek Rd.	Motorized (See comments)	Non-designated	Motorized to pass only.
41. Winfield Creek Rd.	Motorized	Motorized	
42. Woodmere, McKendrick Circle	Motorized	Non-designated	

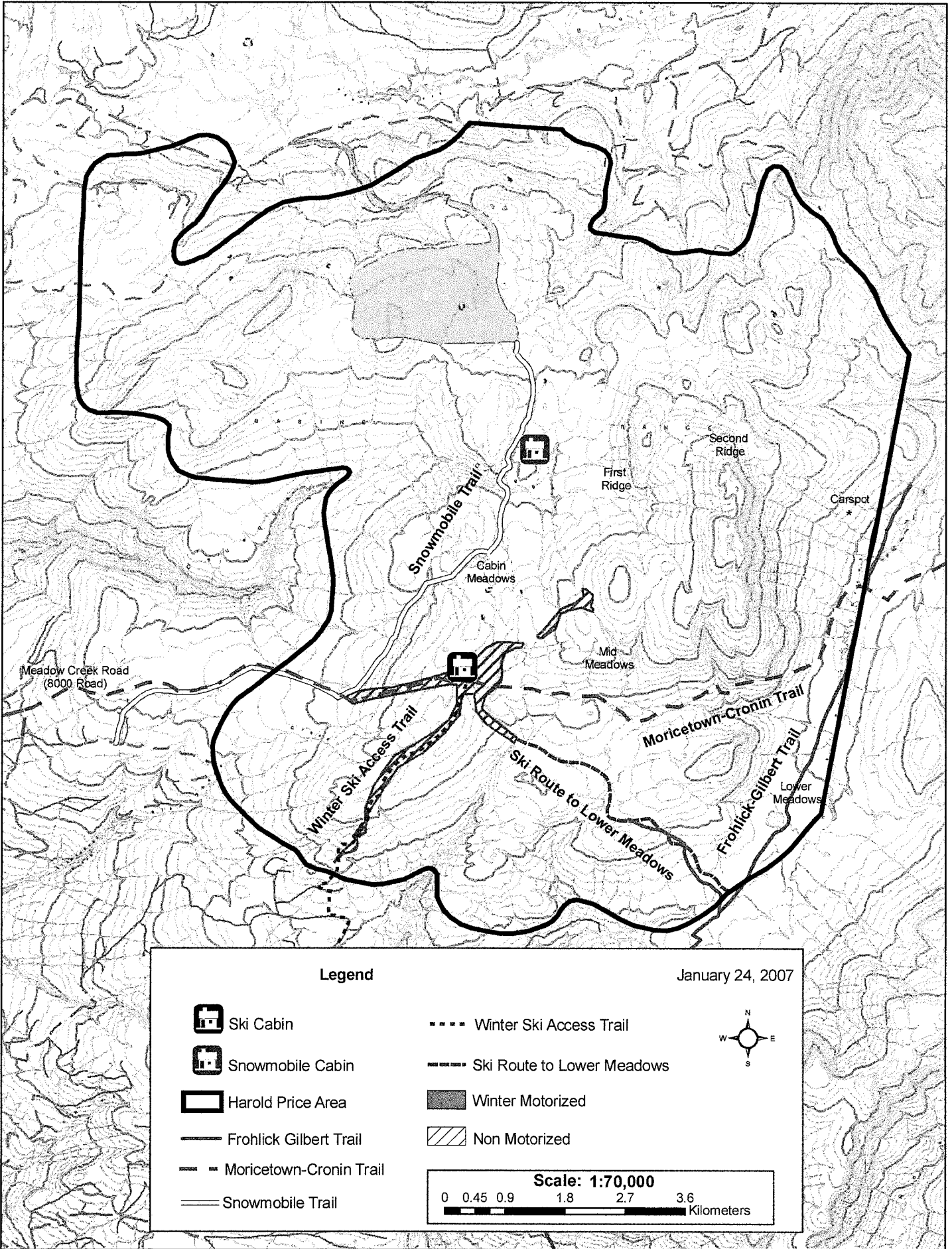


## Babine Mountains Park Access Agreements

Visit <http://www.env.bc.ca/bcparks/explore/parkpgs/babmtn.html> for more information.

**Table 2: Babine Mountains Park Access Agreements.**

TRAILS / ROADS	Summer Motorized	Winter Motorized	Bicycle Use	Horse Use	Comments
Cronin Road	Yes	Yes	Yes	Yes	The first 7 kilometers of this old mining road off Babine Lake Road up to Cronin Creek are outside of BC Parks' boundaries and allow motorized use.
Cronin Creek Trail	No (See comments)	No (See comments)	Yes	Yes	The next 7 kilometers, following the Cronin Creek crossing, border the Babine Mountains Park boundary and are designated for BC Parks' control of access under Section 6 of the Park Act. This area is non-motorized to the park boundary (the road is gated above old Cronin mine site). Permission may be granted to Smithers Snowmobile Association (SSA) for occasional summer motorized access to maintain the Ministry of Forests lookout in summer. Letters of Permission from BC Parks to the SSA allows up to <b>3</b> snowmobile trips annually into the Cronin special permit area.
Driftwood Road	Yes (See comments)	No (See comments)	Yes	Yes	Vehicle access in summer up to park gate. In winter, the road is not plowed beyond the park boundary and is non-motorized. One snowmobile may be used by the licensed trapper for trapline activities from November – February.
Fletcher – Gardiner Trail	No (See comments)	No	No	No	Also known as <b>Reiseter Lake Trail</b> and <b>Two Bridge Trail</b> . Limited ATV access for 6 kilometers along Fletcher-Gardiner trail to Harry Orm's Cabin for traditional purposes. Foot traffic only beyond that. Users must obtain permission and a key to the Sunny Point gate from BC Parks. Motorized access between <b>June 15</b> and <b>November 15</b> only.
Four Lakes Area	No	No (See comments)	No	No	Letters of Permission from BC Parks to the SSA allows up to <b>8</b> snowmobile trips annually into the Four Lakes Area.
Harvey Mountain	No	No	Yes	Yes	Non-motorized use only. There is a gate a couple of kilometers up from Harvey Mountain Road trailhead that is locked all year.
Higgins Creek Trail	No	No	Yes	Yes	
Little Joe Creek Trail	No	No	No	No	Foot traffic only (hiking, snowshoeing, skiing).
Little Onion Trail	No	Yes	Yes	Yes	This road is outside of park boundaries but is designated for BC Parks' control of access under Section 6 of the Park Act. There is a gate about 1.5 kilometers up the road that is closed during the summer, but that opens in November.
Lyon Creek	No	No	No	No (See comments)	Letters of Permission required from BC Parks for restricted horse access. Contact BC Parks or the Backcountry Horsemen Society of BC for terms and conditions.
McCabe Trail	No	No	No	No	Foot traffic only (hiking, snowshoeing, skiing).
Orange Trail	No	Yes	Yes	Yes	This road is outside of park boundaries but is designated for BC Parks' control under Section 6 of the Park Act.
Silver King Basin Trail	No	No (See comments)	Yes	Yes	One snowmobile may be used by the licensed trapper for trapline activities from November – February.



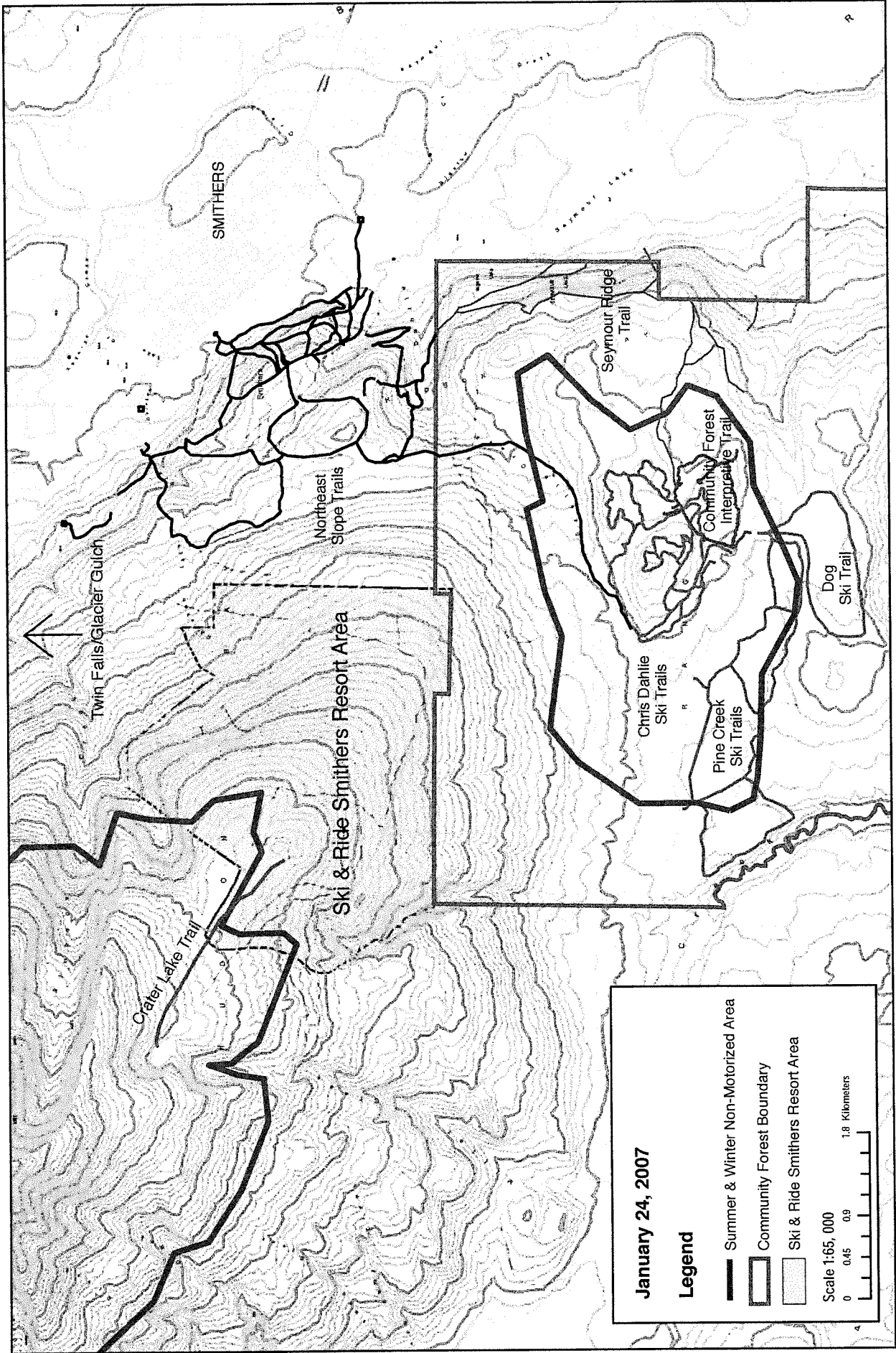


## Harold Price Meadows Access Agreements

**Table 3: Harold Price Meadows Access Agreements.**




<b>TRAILS / ROADS</b>	<b>Summer Motorized</b>	<b>Winter Motorized</b>	<b>Bicycle Use</b>	<b>Horse Use</b>	<b>Comments</b>
Frohlick-Gilbert Trail	No	Yes	No	No	Trail is accessed through Harold Price Meadows.
Moricetown-Cronin Trail	No	No	No	No	Trail passes through the Harold Price area through the Mid Meadows.
Ski access trail	No	No	No	No	Ski access trail is from Mead Creek Forest Service Road and is within a non-motorized corridor. The non-motorized corridor starts part-way up the trail (once within the Harold Price Meadows, not immediately at the road).
Ski route to Lower Meadows	No	No (See comments)	No	No	The route to the lower meadows is within the winter motorized area. The non-motorized area goes to the north end of the mid-meadows (just as you break out of the trees into the mid-meadows). Ski route to the first ridge is within non-motorized corridor. Snowmobile crossings of the route are to be kept to a minimum. Crossings of the ski route should be at right angles to minimize impact.
Snowmobile Trail	No	Yes	N/A	N/A	This trail may require rehabilitation from earlier unauthorized summer motorized use.

<b>STRUCTURES</b>	<b>Summer Motorized</b>	<b>Winter Motorized</b>	<b>Bicycle Use</b>	<b>Horse Use</b>	<b>Comments</b>
Ski Cabin	No	No	No	No	Foot traffic only (hiking, snowshoeing, skiing).
Snowmobile Cabin	No	Yes	No	No	Cabin built through agreement with the Ministry of Forests and Range.



January 24, 2007

**Legend**

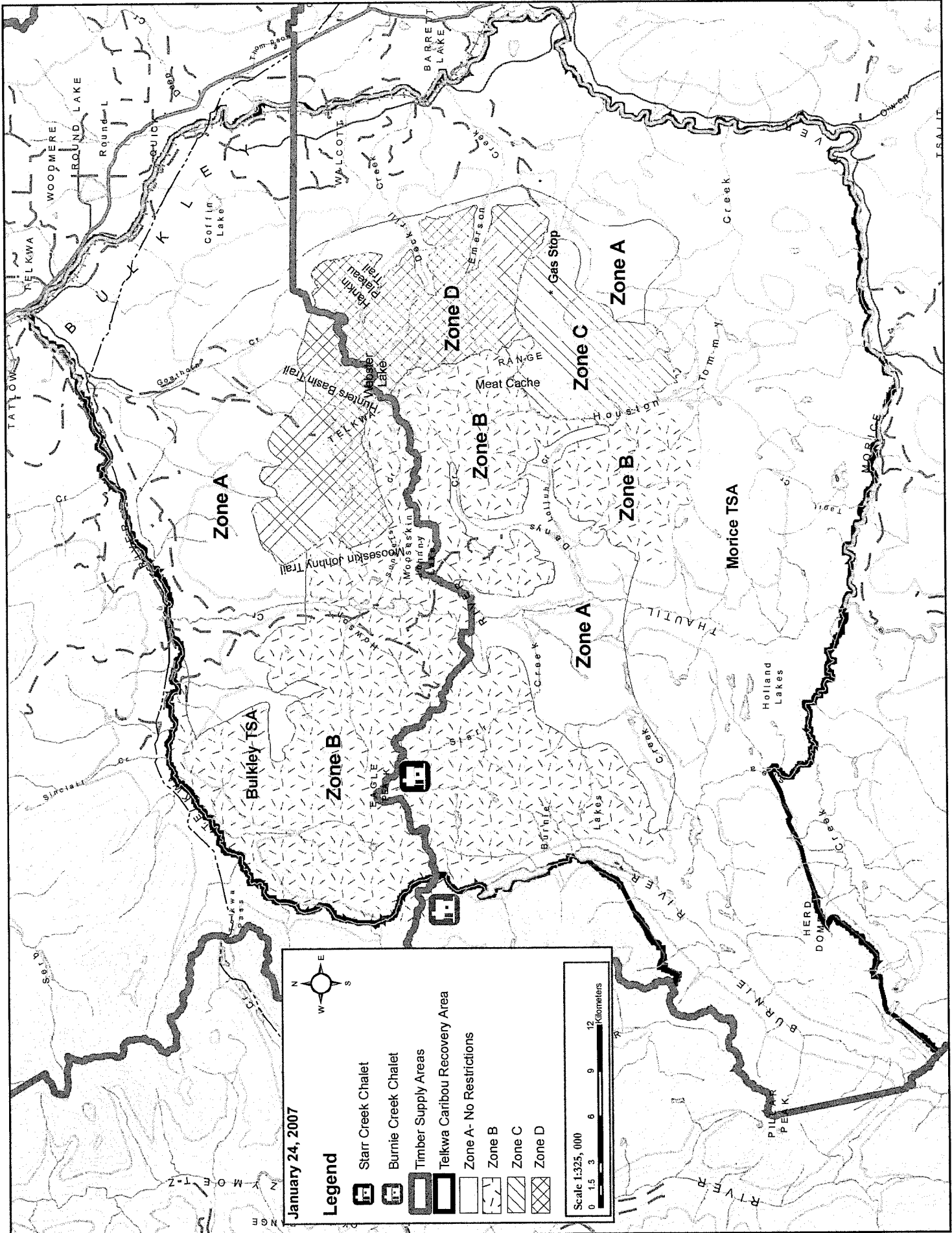
-  Summer & Winter Non-Motorized Area
-  Community Forest Boundary
-  Ski & Ride Smithers Resort Area

Scale 1:65,000  
 0 0.45 0.9 1.8 Kilometers

## Hudson Bay Mountain Access Agreements

**Table 4: Hudson Bay Mountain Access Agreements.**

<b>TRAILS / ROADS</b>	<b>Summer Motorized</b>	<b>Winter Motorized</b>	<b>Bicycle Use</b>	<b>Horse Use</b>	<b>Comments</b>
Community Forest Interpretative Trail	No	No	No	No	Also known as the Community Forest Nature Trail. Foot traffic only (hiking, snowshoeing, skiing).
Crater Lake	No	No	No	No	Foot traffic only (hiking, snowshoeing, skiing).
Hudson Bay Mountain Peak	No	No	No	No	Foot traffic only (hiking, snowshoeing, skiing).
Prairie	No	No	No	No	Foot traffic only (hiking, snowshoeing, skiing).
Seymour Ridge Trail	No	No	No	No	Foot traffic only (hiking, snowshoeing, skiing). Part of the Northeast Slopes network of trails.
<b>AREAS</b>	<b>Summer Motorized</b>	<b>Winter Motorized</b>	<b>Bicycle Use</b>	<b>Horse Use</b>	<b>Comments</b>
Chris Dahlie Ski Trails	No	No	No	No	Trail pass must be purchased for skiing. No dogs allowed.
Glacier Gulch and Twin Falls	No	No	Yes	Yes	Forest Recreation day use area. Pets must be on a leash.
Northeast Slopes	No	No	Yes (see comments)	Yes (see comments)	Some trails support bicycle and horse use, including some steep connecting trails that are being used for extreme mountain biking (and are therefore not suitable for hiking). Anyone using bicycles or horses must accommodate hikers.
Pine Creek Ski Trails	No	No	No	No	Trail pass must be purchased for skiing. Dogs are only allowed on the Dog Trail.
Ski and Ride Smithers	No	No (not public)	Yes	No	Commercial ski resort. Must supply access to crown land beyond boundaries. Currently looking to expand tenure boundaries and expand business to 4 seasons. Tenure amendment has been submitted to M TSA. For further updates, visit <a href="http://www.skismithers.com/welcome/">www.skismithers.com/welcome/</a>
Smithers Community Forest	No	No	Yes	Yes	A new Community Forest Agreement is being proposed which would overlay and expand on the boundaries of the existing 1988 Smithers Community Forest.



## Telkwa Mountains Caribou Recovery Area Access Agreements

The restrictions and boundaries represented here may change if the needs of the caribou change. Legal access restrictions to this area are currently under review, so be sure to obey all signs and check with the Ministry of Environment prior to entering for up-to-date information on access restrictions.

### Behaviour Protocol for all Recreationists within the Recovery Area (regardless of zone)

1. Dogs are not permitted in the alpine
2. If caribou tracks are observed do not follow the tracks.
3. If you see caribou do not approach. Do not attempt to get closer for photographs. Stay downwind if possible.
4. If caribou are encountered while you are operating a motorized vehicle, turn off your machine and allow the animals to calmly move away. After the caribou have departed, leave the area. Make every effort to minimize disturbance.
5. If caribou are encountered while you are engaged in non-motorized activities such as skiing, hiking, cycling or riding keep voices quiet and movement limited until the caribou have left the area. If the animals do not appear to see you, leave the area immediately.
6. Remember you are in their home.

Table 5: Telkwa Mountains Caribou Recovery Area Access Agreements.

AREAS	Summer Motorized	Winter Motorized	Bicycle Use	Horse Use	Comments
Zone A – Integrated Use Area	Yes	Yes	Yes	Yes	Some deactivation of industrial roads (gates, barricades, ditching and bridge removal).
Zone B – Non-motorized Area	No (See comments)	No (See comments)	Yes	Yes	Some winter motorized recreation opportunities are potentially available into the area west of Moosekin Johnny Lake off of the Moosekin Johnny Trail through the Houston and Smithers snowmobile clubs before <b>April 30</b> . Motorized access is allowed on the <b>Moosekin Johnny Trail</b> along the old access trail from Telkwa River bridge to Moosekin Johnny Lake. Industrial access upgrades and development are not intended to improve or increase recreational access to the area. No dogs allowed.
Zone C – Grizzly Plateau Area	No (See comments)	Yes	Yes	Yes	No summer ( <b>May 1- September 15</b> ) motorized recreation access is allowed past the “Gas Stop” on top of the knoll. Summer motorized access is on hard pack only. Additional limited access opportunities may be available through clubs after discussion with the Voluntary Recreation Access Management Group (VRAMG). Contact Wildlife Officer, Environmental Stewardship Division, Ministry of Environment, Skeena Region. See <a href="http://wlapwww.gov.bc.ca/ske/">http://wlapwww.gov.bc.ca/ske/</a> . No dogs allowed.
Zone D – Core Recovery Area	No (See comments)	No	No (See comments)	No (See comments)	Includes Hankin Plateau, Webster Lake, and Hunters Basin. No recreational access (including non-motorized) is allowed, except for non-motorized (including bicycles and horseback) access between <b>July 15</b> and <b>September 30</b> . Limited summer motorized access opportunities available through clubs after discussion with the Voluntary Recreation Access Management Group (VRAMG). Contact Wildlife Officer, Environmental Stewardship Division, Ministry of Environment, Skeena Region. See <a href="http://wlapwww.gov.bc.ca/ske/">http://wlapwww.gov.bc.ca/ske/</a> . No dogs allowed.

<b>STRUCTURES</b>	<b>Summer Motorized</b>	<b>Winter Motorized</b>	<b>Bicycle Use</b>	<b>Horse Use</b>	<b>Comments</b>
Starr Creek Cabin (Zone B)	No	No (See comments)	Yes	Yes	Starr Creek Cabin is maintained by the Bulkley Valley Cross-country Ski Club, and has a reservation system in place. Reservations can be made at Valhalla Pure Outfitters (1122 Main Street; 250.847.0200). Non-motorized users may access Starr Creek Cabin via helicopter. Helicopter use is addressed through the helicopter companies and Voluntary Recreation Access Management Group (VRAMG). Generally no motorized recreational access is allowed, although some winter motorized recreation opportunities are potentially available through the Smithers and Houston Snowmobile Clubs, provided the needs of the caribou are met. Ask at local shops for further information. No winter motorized activity after <b>April 30</b> . No dogs allowed.

## Quick Reference by Mode Type

### Summer Motorized

#### Access

- Boulder Creek Trail (page 1)
- Coffin Lake Rd (page 1)
- French Peak (page 1)
- Hankin Lake (page 1)
- Hankin Lookout Trail (page 1)
- Rocky Ridge Rd (page 4)
- Telkwa Pass (page 2)
- Toboggan Creek Rd. (page 2)
- Winfield Creek Rd / Microwave Trail (page 2)
- Woodmere / McKendrick Circle (page 2)

#### Restricted Access Trails

- Cronin Creek Road (page 4)
- Fletcher – Gardiner Trail (page 4)
- Higgins Creek Trail (page 4)
- Little Onion Trail (page 4)
- Orange Trail (page 4)
- Reisetser Lake Trail (page 4)
- Two Bridge Trail (page 4)

#### Access Areas

- Zone A – Integrated Use Area (page 10)

#### Restricted Access Areas

- Babine Mountain Snowmobile Area (page 4)
- Driftwood Reisetser (page 4)
- Zone B – Non-motorized Area (page 10)
- Zone C – Grizzly Plateau Area (page 10)
- Zone D – Core Recovery Area (page 10)

#### Non-designated

- Ashman Ridge (page 1)
- Canyon Creek Ski Trails (page 1)
- Dome Trail / cabin (page 1)
- Microwave Plateau and Trail (page 2)
- Owen, Passby and Elliot Creeks and Passby Creek Trail (page 2)

### Winter Motorized

#### Access Trails

- Call Lake Provincial Park (page 1)
- Dome Trail / cabin (page 1)
- Frohlick-Gilbert Trail (page 6)
- Little Onion Trail (page 4)
- Microwave Plateau and Trail (page 2)
- Orange Trail (page 4)
- Sinclair Range and Cabin (page 2)
- Snowmobile trail (called connector trail on map) (page 6)
- Winfield Creek Rd / Microwave Trail (page 2)

#### Restricted Access Trails

- Ski route to Lower Meadows (page 6)
- Cronin Creek Road (page 4)

#### Access Areas

- Babine Mountain Snowmobile Area (page 4)
- Zone A – Integrated Use Area (page 10)
- Zone C – Grizzly Plateau Area (page 10)

#### Restricted Access Areas

- Cronin (page 4)
- Four Lakes (page 4)
- Zone B – Non-motorized Area (page 10)

#### Structures

- Snowmobile cabin (page 6)

#### Restricted Structures

- Starr Creek Cabin [Zone B] (page 10)

#### Non-designated

- Boulder Creek Trail (page 1)
- Bud Lake, Louise Lake, Sandstone Lake (page 1)
- Coffin Lake Rd. (page 1)
- French Peak (page 1)
- Hankin Lake (page 1)
- Hankin Lookout Trail (page 1)
- Rocky Ridge Rd (page 2)
- Seaton Basin and Seaton Basin Rd (page 2)
- Silvern Lakes Trail (page 2)
- Telkwa Pass (page 2)
- Toboggan Creek Rd. (page 2)
- Woodmere / McKendrick Circle (page 2)

## **Bicycle Use**

### *Access Trails*

- Blunt Basin (page 1)
- Bud Lake, Louise Lake, Sandstone Lake (page 1)
- Call Lake Provincial Park (page 1)
- Corya Basin (page 1)
- Cronin Creek Road (page 4)
- Glacier Gulch and Twin Falls (page 10)
- Harvey Mountain (page 4)
- Higgins Creek Trail (page 4)
- Little Onion Trail (page 4)
- McDowell Lake and Road and Trails (page 2)
- Northern Mulwain (page 2)
- Orange Trail (page 4)
- Seaton Basin and Seaton Basin Rd (page 2)
- Silver King Basin Road (page 4)
- Silvern Lakes Trail (page 2)
- Sinclair Range and cabin (page 2)

### *Access Areas*

- Cronin (page 4)
- Smithers Community Forest (page 8)
- Zone A – Integrated Use Area (page 10)
- Zone B – Non-motorized Area (page 10)
- Zone C – Grizzly Plateau Area (page 10)

### *Restricted Access Areas*

- Northeast Slopes (page 8)
- Ski and Ride Smithers (page 8)
- Zone D – Core Recovery Area (page 10)

### *Structures*

- Starr Creek Cabin [Zone B] (page 10)

### *Non-designated*

- Ashman Ridge (page 1)
- Canyon Creek Ski Trails (page 1)
- Dome Trail / cabin (page 1)
- Microwave Plateau and Trail (page 2)
- Owen, Passby and Elliot Creeks and Passby Creek Trail (page 2)

## **Horse Use**

### *Access Trails*

- Blunt Basin (page 1)
- Bud Lake, Louise Lake, Sandstone Lake (page 1)
- Call Lake Provincial Park (page 1)
- Corya Basin (page 1)
- Cronin Creek Road (page 4)
- Glacier Gulch and Twin Falls (page 8)
- Harvey Mountain (page 4)
- Higgins Creek Trail (page 4)
- Little Onion Trail (page 4)
- McDowell Lake and Road and Trails (page 2)
- Northern Mulwain (page 2)
- Orange Trail (page 4)
- Seaton Basin and Seaton Basin Rd (page 2)
- Silver King Basin Road (page 4)
- Silvern Lakes Trail (page 2)
- Sinclair Range and cabin (page 2)

### *Restricted Access Trails*

- Lyon Creek Trail (page 4)

### *Access Areas*

- Cronin (page 4)
- Smithers Community Forest (page 8)
- Zone A – Integrated Use Area (page 10)
- Zone B – Non-motorized Area (page 10)
- Zone C – Grizzly Plateau Area (page 10)

### *Restricted Access Areas*

- Northeast Slopes (page 8)
- Zone D – Core Recovery Area (page 10)

### *Structures*

- Starr Creek Cabin [Zone B] (page 10)

### *Non-designated*

- Ashman Ridge (page 1)
- Canyon Creek Ski Trails (page 1)
- Dome Trail / cabin (page 1)
- Microwave Plateau and Trail (page 2)
- Owen, Passby and Elliot Creeks and Passby Creek Trail (page 2)