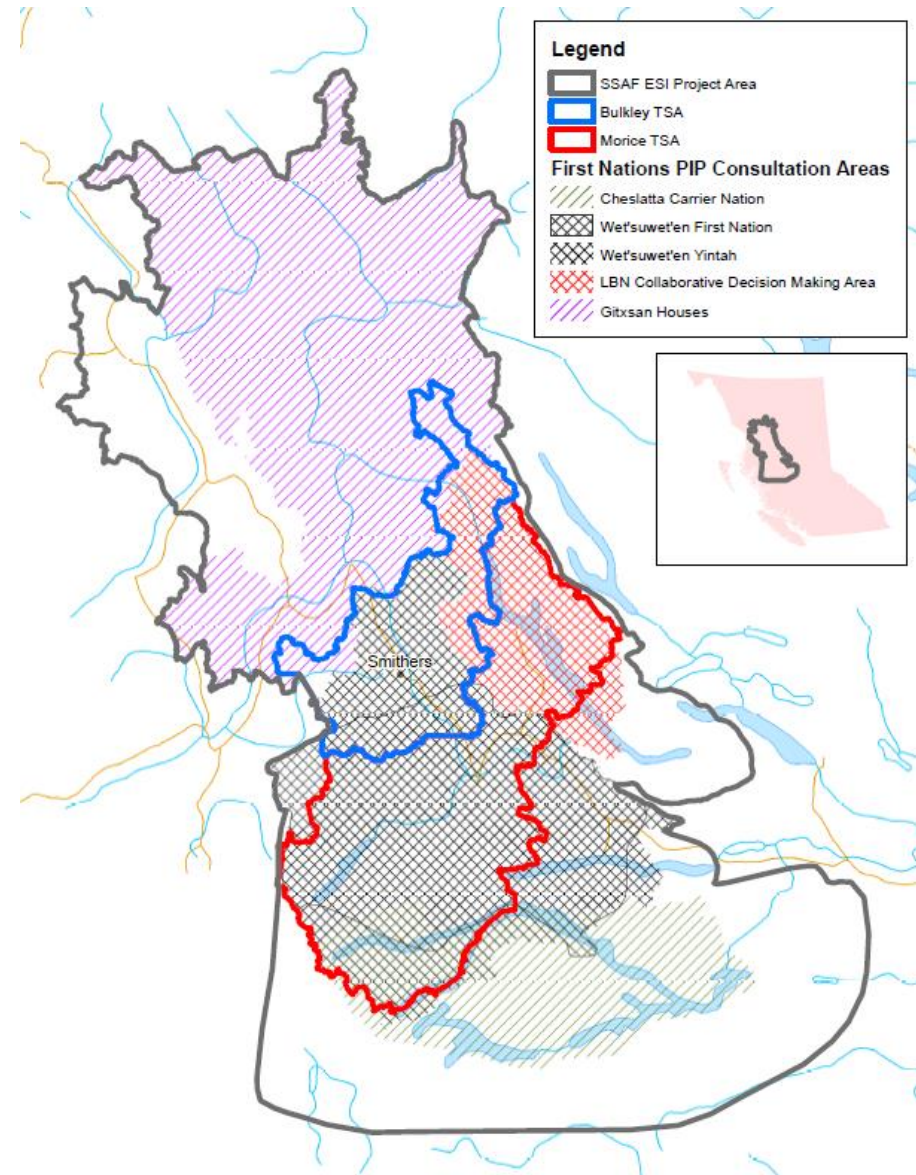


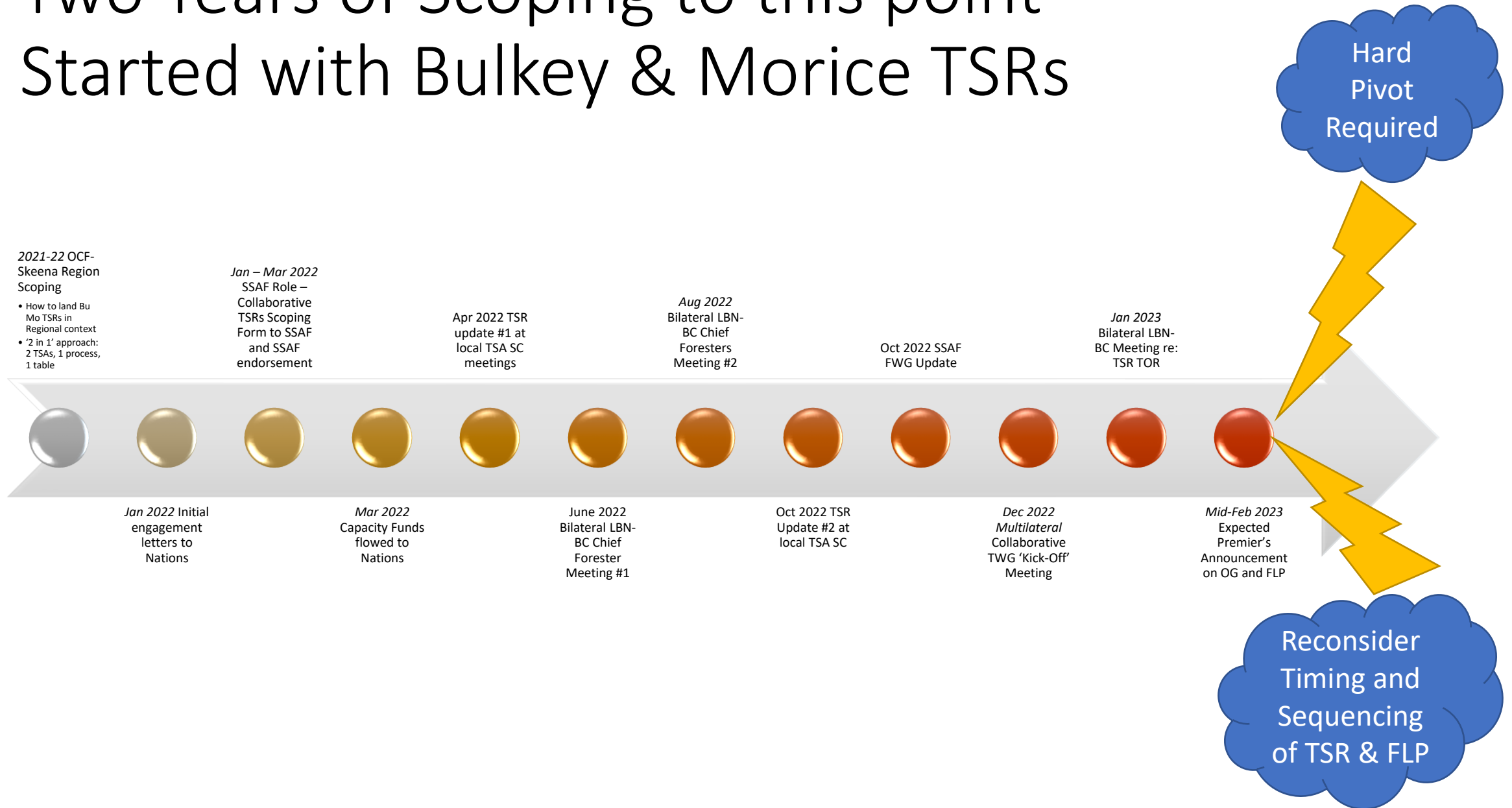


Bulkley & Morice TSAs

Location of Bulkley and Morice TSA's relative to SSAF ESI Project Area



Two Years of Scoping to this point – Started with Bulkey & Morice TSRs




Old Growth Deferrals in Bulkley/Morice

- Deferral Responses from Nations are varied
- Voluntary deferrals occurring in BCTS Business Areas and CSFN BMA's
- Opportunities for biodiversity or conservation deferrals by Nations involved in Bulkley Morice Collaborative TSR process that are non-TAP

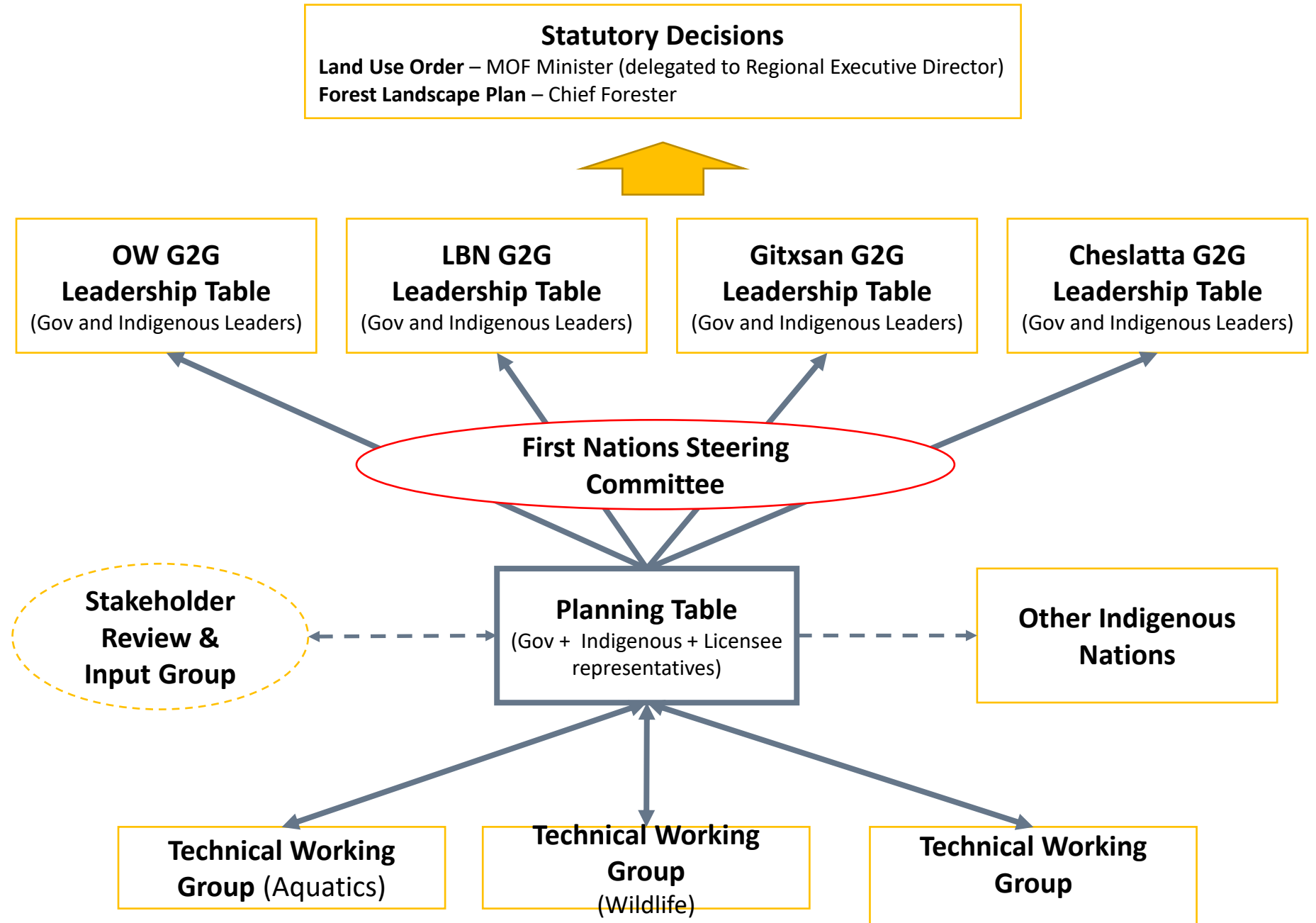
Regional Context – it is complex and complicated and evolving quickly

- FLP Pilot in Skeena, SSAF Engaged
- Collaborative Management Principles
- Bilateral Agreements and investments into multi-lateral forums
- 1 Process for both TSAs
- New ways of operating required



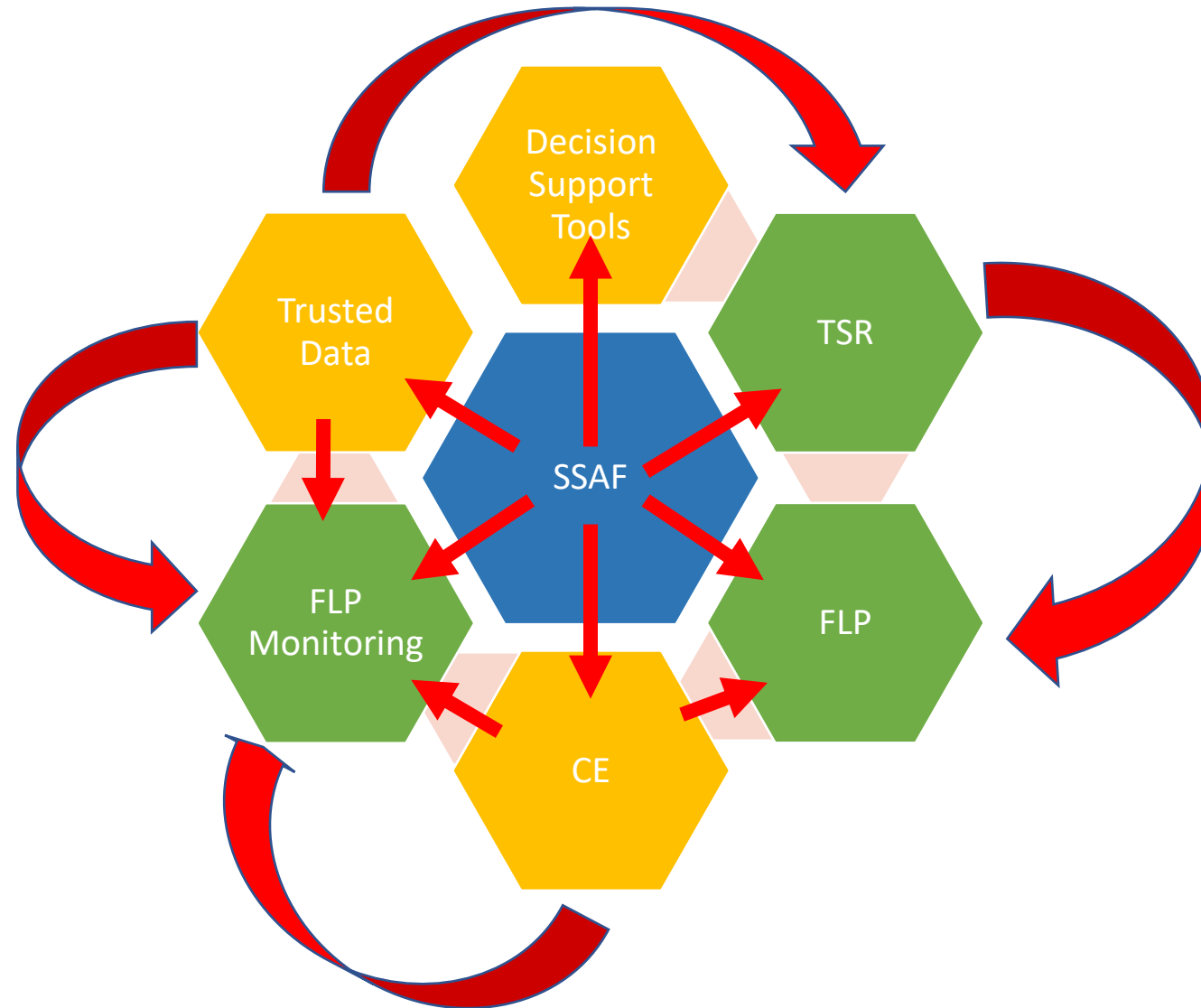
Reconciliation occurs in the region, in the context of locally-held relationships and locally-developed solutions

Potential Planning Table Structure and Opportunity for CRB Participation



Integration Points/Sharing Resources

- Yellow hexagons linked- data inputs/decision making supports
- Green hexagons linked- mandated forest stewardship processes





Questions?